



Saint Helen's Redevelopment



Fundamentals

- New 3G pitch realigned with the existing terrace
- Three new/repurposed stands
- Roof over the existing terrace
- Capacity of 8044-8396
- Shared facility





Saint Helen's Redevelopment



Timeline

Date/Period	Milestone
July 2024	Ospreys announce move from Swansea.com Stadium to St Helen's for 2025–26 season Ospreys Announce St Helen's as New Home Stadium Ospreys
June 2025	Final planning application submitted ; public consultation completed Ospreys Rugby Submit Planning Application for St Helen's Redevelopment Ospreys
August 2025	Swansea Council grants unanimous planning approval Planning Approval Granted for Ospreys' Redevelopment of St Helen's Ospreys
September 2025	Construction begins after Swansea Cricket Club's season ends
December 2025 (target)	Ospreys aim to play first match at revamped St Helen's
2026 onward	Phase 2 begins : construction of training barn and gym



Saint Helen's Redevelopment



Strategic Goals

- Create a community rugby hub involving schools, age-grade teams, Swansea RFC, and Swansea University.
- Preserve the historic identity of St Helens while modernising facilities.
- Support the local economy and independent businesses near the ground.



Saint Helen's Redevelopment



Planning Application Phase 1 (approved 5/8/25)

- An new all-weather artificial grass pitch - (l 104m x w 70m) moved parallel to the existing northern terrace (in-turn being slightly re-orientated)
- three new stands and a canopy/roof above the existing northern terrace – giving a total capacity of 8,396
- a fan zone (with retractable roof)
- replacement floodlights
- access, car park and media compound, and additional fan entrances
- toilet facilities, ticket sales office, big screen and wheelchair spectator seats
- various green infrastructure and sustainable urban drainage



Saint Helen's Redevelopment



Northern Terrace Visualisation – canopy / roof added - 3,800





Saint Helen's Redevelopment



West Stand Visualisation – ‘The Sin Bin’ – 1,020 (existing south stand relocated)





Saint Helen's Redevelopment



East Stand Visualisation – 'Family Stand' – 1,638





Saint Helen's Redevelopment



South Stand Visualisation





Saint Helen's Redevelopment



South Stand Visualisation – hospitality with view of the sea





Saint Helen's Redevelopment

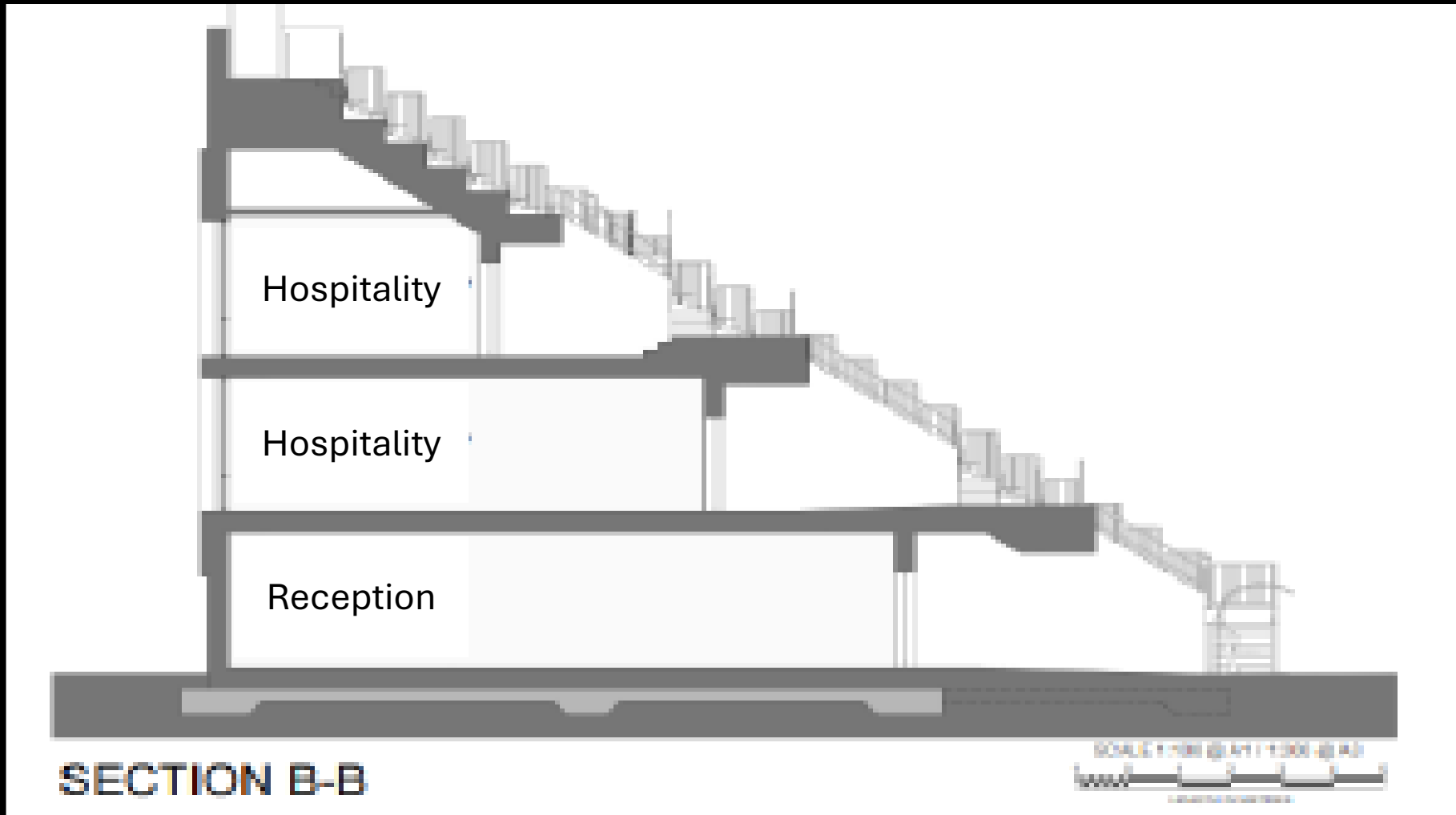


South Stand Visualisation – end view



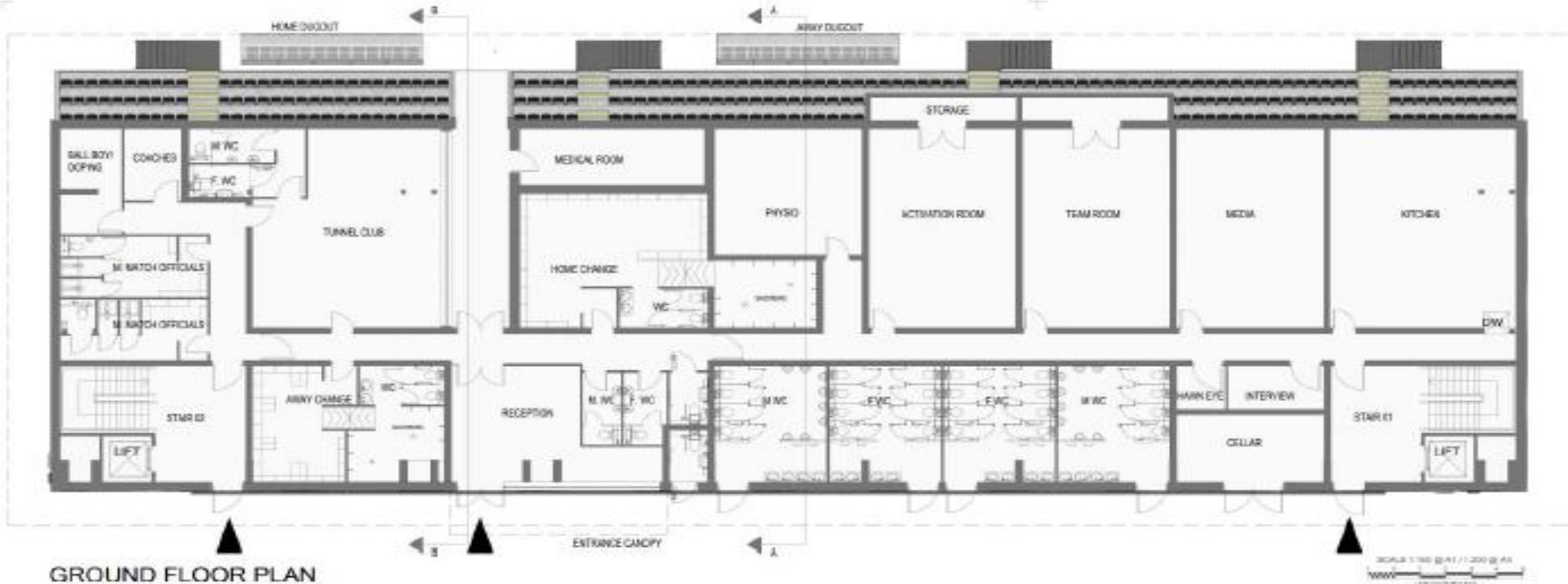
Saint Helen's Redevelopment

Plan Views: South Stand Side Elevation



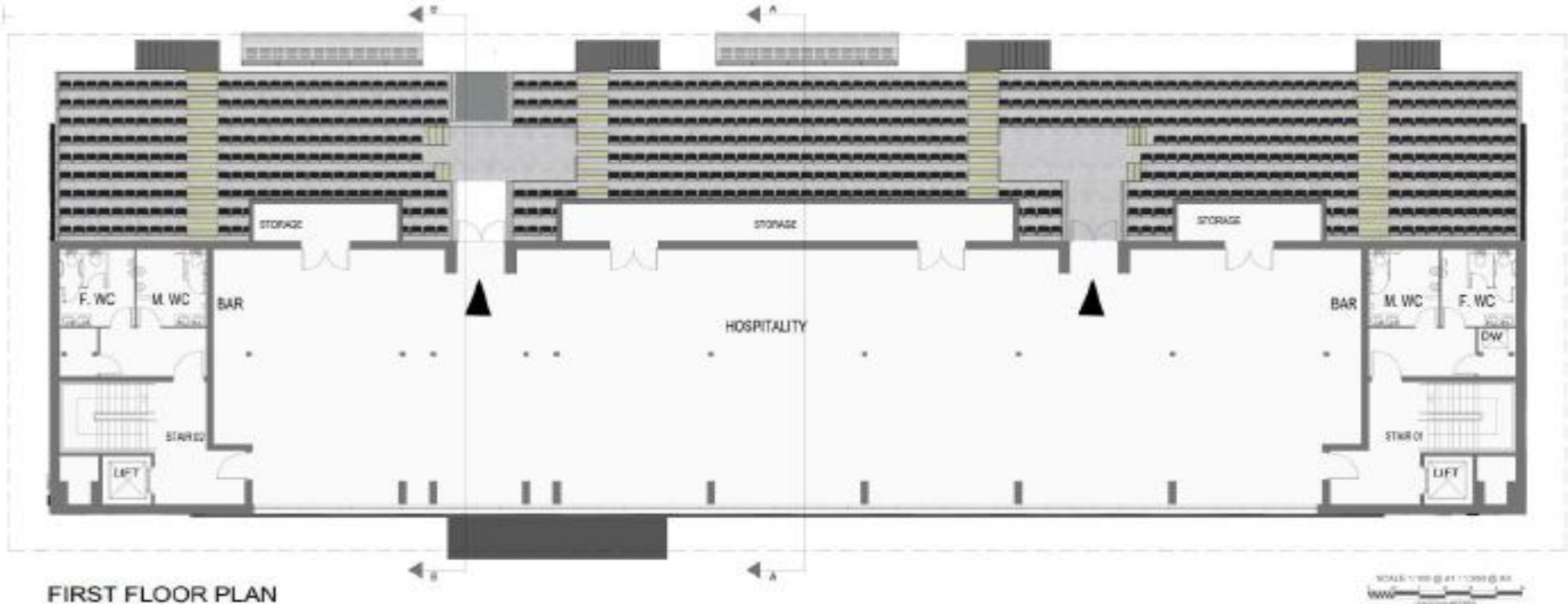
Saint Helen's Redevelopment

Plan Views: South Stand Ground Floor



Saint Helen's Redevelopment

Plan Views: South Stand First Floor



Saint Helen's Redevelopment

Plan Views: Phase 1 - Fan Zone



Travel

- A Travel Plan will be prepared that will outline a package of measures that will be implemented to maximise the use of sustainable transport and reduce the number of car borne trips. These measures will include a Park & Ride service that will run between the ground and the Swansea University campus on matchdays
- There are several car parks around the site that together provide a total of around 638 parking spaces
- Welsh Government policy requires the use of a sustainable transport hierarchy:
 - Walking and Cycling
 - Public Transport
 - Ultra Low Emission Vehicles
 - Other Private Motor Vehicles

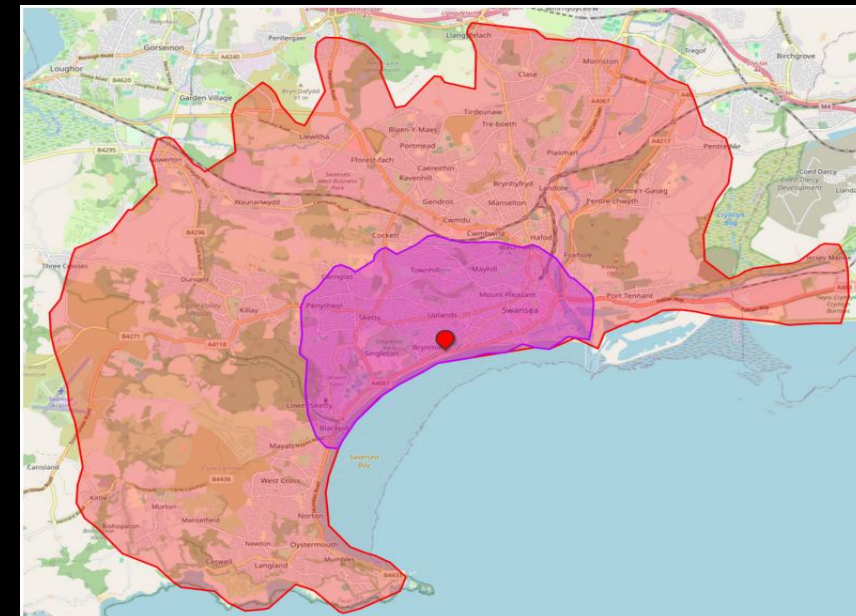


Figure 4 2-Mile Walk & 5-Mile Cycle Catchment Area



Report of the Section 151 Officer

Council – 6 March 2025

Capital Budget & Programme 2024/25- 2029/30

Phased, considered affordable borrowing, within the overall planning envelope has developed over recent years and, in the case of the funding, from the City Deal, across the next 10 years. Some major schemes within the General Fund Capital Programme which are partially or fully financed by borrowing are as follows:

.....

- St Helens ground redevelopment
2024/25 - £1.1 million
2025/36 -£5 million

<https://democracy.swansea.gov.uk/documents/g11669/Public%20reports%20pack%20Thursday%2006-Mar-2025%2017.00%20Council.pdf?T=10>